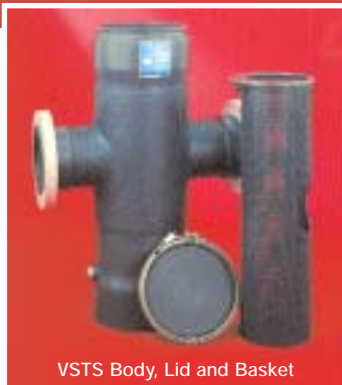


## Corrosion Resistant Basket Strainers

### High Flow, High Capacity Thermoplastic Design



- Series KST 2"-4" PVC & CPVC Strainers
- Series LST 2"-8" Polypropylene Strainers
- Series VSTS 6"-14" Fiberglass-Wrapped PVC Large Pipeline Strainers

#### Features:

- No jamming and quick removal for ease of cleaning. No tools needed.
- Prevents debris from damaging pump.
- Offset Port Design (lower outlet on KST, LST in 2", 3" and 4" sizes) provides a "priming chamber" for non-self-priming pumps when used on suction side.
- High performance and low cost is a direct result of heavy-duty construction and simplicity of design.
- Strongly perforated baskets designed for ease of servicing and long-life.
- Large basket capacity for less frequent cleaning.
- High flow rate capacity.
- Optional Gauge Guard connections for measuring pressure drop across a clean versus a debris-filled basket. Gauge Guards protect gauges from corrosion and clogging.
- PVC Strainers – 2" through 14" pipeline sizes.
- Polypro Strainers – 2" through 8".
- CPVC Strainers – 2", 3" and 4".

#### Body and Cover Design:

Plast-O-Matic Basket Strainer bodies are heavy-duty welded construction, and all wetted parts are thermoplastic for maximum corrosion resistance. Flange connections are available on 2" through 8" polypropylene, and 2" through 14" PVC. Socket connections are available in 2" through 4" PVC and CPVC. Threaded connections are offered on 2" through 4" PVC and CPVC as well as 2" and 3" polypropylene. On KST and LST, the cover is a heavy-duty plate securely bolted to the body with easy to remove hand knobs. Cover on Series VSTS is secured with a V-band clamp. No tools are required for either design. Cover seal is an O-ring that is pulled against the body face resulting in a non-jamming positive closure. It simply lifts off!

#### Basket Strainer Design:

Plast-O-Matic perforated thermoplastic baskets are heavy-duty welded construction designed for durability as well as ease of basket removal and cleaning. They have a large ratio of open basket area to pipe size to reduce the pressure drop across a clean basket, and to increase time between cleanings. A variety of hole diameters are available. It is recommended to keep a spare basket on hand at all times.

# SERIES KST IN PVC AND CPVC



**Sizes:** 2", 3", and 4"

**Pressure Ratings:** 100 PSI and full vacuum; see chart below for specific sizes/temperatures.

**Body and Cover:** Available with pipe connections of 2", 3" and 4" socket or flanged. Threaded connections are optional; consult factory.

**Basket Strainer Design:** All sizes have a 1/8" (3.2mm) wall thickness with 1/8" diameter holes as standard. For PVC (only) optional 1/16" (1.6mm) and 1/32" (.8mm) holes are also available.

**Materials of Construction:** PVC bodies, covers and baskets are Type 1, Grade 1 Geon PVC. For CPVC, ASTM-D1784 Corzan CPVC is used. O-ring cover seals are Viton; other seal materials available. External molded hand knobs are phenolic with brass threaded inserts.

## Superior Features:

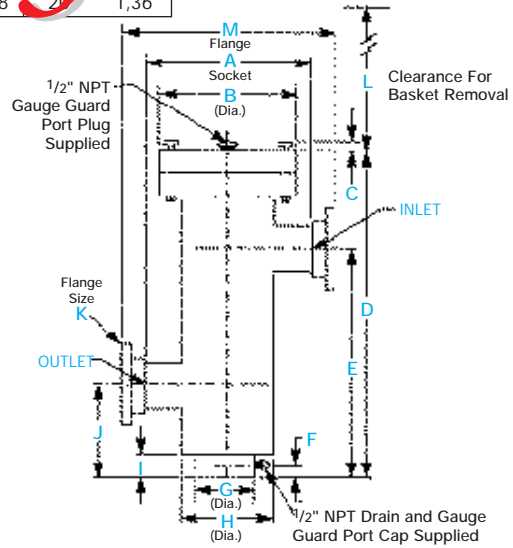
- Non-jamming and quick removal cover for ease of cleaning. No tools needed.
- High performance and low cost is a direct result of heavy-duty construction and simplicity of design
- Sturdy perforated baskets designed for ease of servicing and long-life.
- Large basket capacity for less frequent cleaning.
- High flow capability up to 100 PSI pressure rating.
- Optional Gauge Guard connections for measuring pressure drop across a clean versus a debris-filled basket. Gauge Guard protects gauges from corrosion and clogging.

## OPERATING PRESSURES vs. TEMPERATURE

Pipe Size	TEMPERATURE AND PRESSURE											
	75°F PSI	24°C BARS	100°F PSI	38°C BARS	120°F PSI	49°C BARS	140°F PSI	60°C BARS	160°F PSI	71°C BARS	180°F PSI	82°C BARS
PVC	2	100	6,80	60	4,08	40	2,72	20	1,36	N.R.	N.R.	N.R.
	3	100	6,80	60	4,08	40	2,72	20	1,36	N.R.	N.R.	N.R.
	4	100	6,80	60	4,08	40	2,72	20	1,36	N.R.	N.R.	N.R.
CPVC	2	100	6,80	80	5,44	60	4,08	50	3,40	35	2,38	1,36
	3	100	6,80	80	5,44	60	4,08	50	3,40	35	2,38	1,36
	4	100	6,80	80	5,44	65	4,42	50	3,40	35	2,38	1,36

## DIMENSIONS

DIMENSION	SIZE					
	2		3		4	
	In.	mm	In.	mm	In.	mm
A	8	203	7 1/8	181	11 1/2	292
B	7	178	7	178	9 1/4	234
C	1	25	1	25	1	25
D	17 1/8	435	20 1/2	521	28 7/16	722
E	12 3/4	324	15 1/2	394	21 7/16	545
F	15/8	41	13/4	44	17/8	48
G	4 1/2	114	4 1/2	114	6 5/8	168
H	5	127	5	127	7 1/4	184
I	2 1/2	64	3 1/2	89	3 7/16	87
J	6	152	7 1/2	191	9 7/16	240
K	2	51	3	76	4	102
L	11 1/2	292	18 1/2	470	22 1/4	565
M	11 7/16	290	13 7/8	352	16 5/8	422



## MODEL NUMBERS

PVC	SIZE			CPVC	SIZE		
	2	3	4		2	3	4
Socket	KST0200V-PV	KST0300V-PV	KST0400V-PV	Socket	KST0200V-CP	KST0300V-CP	KST0400V-CP
Flanged	KST0200V-F-PV	KST0300V-F-PV	KST0400V-F-PV	Flanged	KST0200V-F-CP	KST0300V-F-CP	KST0400V-F-CP
Threaded	KST0200V-T-PV	KST0300V-T-PV	KST0400V-T-PV	Threaded	N.A.	N.A.	N.A.

**NOTE:** Model Numbers shown are for basket strainers with standard 1/8" diameter holes. For optional 1/16" or 1/32" holes (only on PVC) add either "16" or "32" at end of Model Number (ex. to order a 2" PVC Basket Strainer with Flanged Ends and 1/16" diameter holes, the Model Number would be KST0200V-F-PV-16. N.A. = Not Available)

## BASKET DIMENSIONS\*

Description	SIZE						Description	SIZE						
	2		3		4			2		3		4		
	In.	mm	In.	mm	In.	mm	In.	cm	In.	cm	In.	cm		
Basket Diameter	3 1/4	83	3 1/4	83	5 3/8	137	Basket Open Area	a)	24 <sup>2</sup>	155 <sup>2</sup>	34 <sup>2</sup>	219 <sup>2</sup>	78 <sup>2</sup>	503 <sup>2</sup>
Basket Length	8	203	11 3/8	289	15 3/16	386		b)	10 <sup>2</sup>	65 <sup>2</sup>	14 <sup>2</sup>	90 <sup>2</sup>	31 <sup>2</sup>	200 <sup>2</sup>
Hole Diameter	a)	1/8	3	1/8	3	1/8		3	c)	5 <sup>2</sup>	32 <sup>2</sup>	8 <sup>2</sup>	52 <sup>2</sup>	18 <sup>2</sup>
	b)	1/16	1.6	1/16	1.6	1/16	1.6	Basket Capacity	55 <sup>3</sup>	901 <sup>3</sup>	79 <sup>3</sup>	1295 <sup>3</sup>	308 <sup>3</sup>	5048 <sup>3</sup>
	c)	1/32	.8	1/32	.8	1/32	.8							
Hole Centers	a)	7/32	5.5	7/32	5.5	7/32	5.5							
	b)	3/32	2.4	3/32	2.4	3/32	2.4							
	c)	1/16	1.6	1/16	1.6	1/16	1.6							

\*Consult Factory For Special Dimensions

DISCONTINUED  
DECEMBER 31, 2005

# SERIES LST IN POLYPROPYLENE



**Sizes: 2", 3", 4", 6" and 8"**

**Pressure Ratings:** 40 PSI and full vacuum; see chart below for specific sizes/temperatures.

**Body and Cover:** Available with pipe connections of 2", 3" threaded or flanged. 4", 6" and 8" sizes are flanged only.

**Basket Strainer Design:** 2", 3" and 4" sizes have a 1/8" (3.2mm) wall thickness with 1/8" diameter holes as standard. 6" and 8" sizes have a 3/16" (4.8mm) wall thickness with and 1/4" diameter holes standard. Stainless steel baskets are also available. For optional perforation sizes, please consult factory.

**Materials of Construction:** In all sizes the bodies, covers and baskets are polypropylene. 6" and 8" sizes have fiberglass reinforced overwrap for added strength. For further information on optional stainless steel baskets, contact factory. O-ring seals are Viton, other seal materials available. External molded hand knobs are phenolic with brass threaded inserts. Assembly tie rods and bolts are type 303 stainless steel.

## Superior Features:

- Non-jamming and quick removal cover for ease of cleaning. No tools needed.
- High performance and competitive cost is a direct result of simple heavy-duty construction.
- Sturdy perforated baskets designed for ease of servicing and long-life.
- Large basket capacity for less frequent cleaning.
- High flow capability with pressures to 40 PSI. See chart.
- Optional Gauge Guard connects for measuring drop across a clean vessel as a debris-filled basket. Gauge Guards protect gauges from corrosion and fouling.

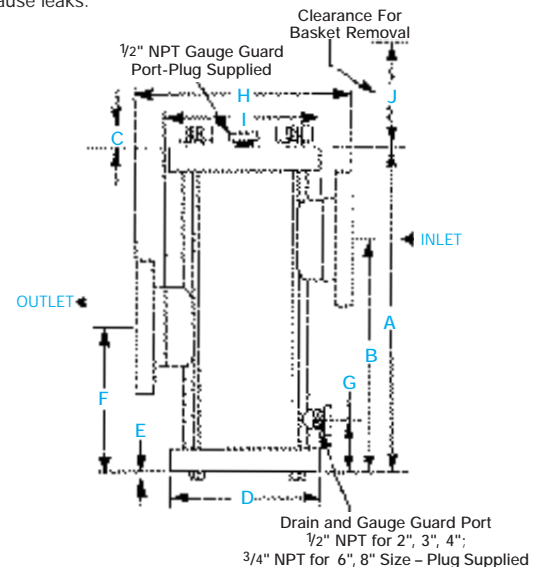


POLYPRO Pipe Size	OPERATING PRESSURES vs. TEMPERATURE											
	TEMPERATURE						PRESSURES					
	75°F PSI	24°C BARS	100 PSI	38°C BARS	150°F PSI	65°C BARS	200°F PSI	90°C BARS	250°F PSI	120°C BARS	300°F PSI	150°C BARS
2	25	1.73	35	2.41	30	2.07	26	1.79	2	1.38	2	0.14
3	4	2.76	25	1.73	30	2.07	26	1.79	2	1.38	2	0.14
4	30	2.07	35	2.41	22	1.55	20	1.38	15	1.04	2	0.14
6	40	2.76	35	2.41	20	1.38	26	1.79	20	1.38	2	0.14
8	30	2.07	25	1.73	22	1.55	20	1.38	15	1.04	2	0.14

**NOTE:** Full vacuum rating to maximum of 160°F (71°C).  
**CAUTION:** Threaded connections with polypropylene are not recommended above 15 PSI as they can cause leaks.

	DIMENSIONS									
	SIZES									
	2		3		4		6		8	
	In.	mm	In.	mm	In.	mm	In.	mm	In.	mm
A	14	356	17 3/8	442	22	559	31	787	42	1067
B	10 5/8	270	13 3/16	335	16 13/16	427	16 1/4	413	23 1/2	547
C	2 3/16	56	2 7/16	62	2 11/16	68	4	102	4	102
D	5 3/4	146	8	203	10	254	10 3/4	273	12 3/4	324
E	1/4	6	3/8	10	3/8	10	—	—	—	—
F	5 7/8	150	7 1/2	191	7 3/4	197	16 1/4	413	23 1/2	597
G	7/8	22	1	25	1	25	1	25	1	25
H	9 1/4	235	12 1/4	311	16 7/8	429	24	610	31 3/4	806
I	6	152	9 3/8	238	—	—	—	—	—	—
J	12	305	15	381	18	457	27	686	37	940

POLYPRO	MODEL NUMBERS				
	SIZES				
	2	3	4	6	8
Threaded	LST0200VT-PP	LST0300VT-PP	N.A.	N.A.	N.A.
Flanged	LST0200VF-PP	LST0300VF-PP	LST0400VF-PP	LST0600VF-PP	LST0800VF-PP



**NOTE:** Illustration is for 2", 3" and 4" size design. The 6" and 8" sizes are inline design where "B" and "F" dimensions are the same.

Description	BASKET SPECIFICATIONS									
	SIZES									
	2		3		4		6		8	
	In.	mm	In.	mm	In.	mm	In.	mm	In.	mm
Basket Diameter	3	76	4 3/4	121	6 1/2	165	8	203	10	254
Basket Length	7	178	9	229	11	279	26 5/8	676	37 5/8	956
Hole Diameter	1/8	3	1/8	3	1/8	3	1/4	6	1/4	6
Hole Center	7/32	5.5	7/32	5.5	7/32	5.5	3/8	9.5	3/8	9.5
Basket Open Area	19.0 <sup>2</sup>	123 <sup>2</sup>	40 <sup>2</sup>	258 <sup>2</sup>	68 <sup>2</sup>	439 <sup>2</sup>	70 <sup>2</sup>	451 <sup>2</sup>	128 <sup>2</sup>	852 <sup>2</sup>
Basket Capacity	40.0 <sup>3</sup>	6552 <sup>3</sup>	153 <sup>3</sup>	2212 <sup>3</sup>	300 <sup>3</sup>	4916 <sup>3</sup>	1200 <sup>3</sup>	19665 <sup>3</sup>	2650 <sup>3</sup>	43426 <sup>3</sup>

# SERIES VSTS IN PVC



**Sizes:** 6", 8", 10", 12" and 14"

**Pressure Ratings:** 100 PSI and full vacuum; see chart below for specific sizes/temperatures.

**Body and Cover:** Available with flange pipe connections.

**Basket Strainer Design:** All baskets have a wall thickness of 1/4" (6.4mm) with 1/4" diameter holes as standard. Optional 1/8" (3.2mm), 1/16" (1.6mm) and 1/32" (.8mm) holes are also available. For optional perforation sizes, please consult factory.

**Materials of Construction:** In all sizes the bodies, covers and baskets are Type 1, Grade 1 PVC (polyvinyl chloride) with fiberglass reinforced overwrap for added strength. O-ring cover seals are EPDM, Viton is optional. V-band clamp is stainless steel.

## Superior Features:

- Non-jamming and quick removal cover for ease of cleaning.
- High performance and competitive cost is a direct result of simple heavy-duty construction.
- Fiberglass wrapped for added strength and durability.
- Sturdy perforated baskets designed for ease of servicing and long-life.
- High flow capacity.
- Optional Gauge Guard connections for measuring pressure drop across a clean versus debris-filled basket. (1/2" NPT connecting port supplied standard). Gauge Guards also protect gauges from corrosion and clogging.

## OPERATING PRESSURES vs. TEMPERATURE

PVC Pipe Size	TEMPERATURE AND PRESSURES											
	75°F PSI	24°C BARS	100°F PSI	38°C BARS	120°F PSI	49°C BARS	140°F PSI	60°C BARS	160°F PSI	71°C BARS	180°F PSI	82°C BARS
6	100	6.80	60	4.08	40	2.72	20	1.36	N.R.	N.R.	N.R.	N.R.
8	75	5.10	45	3.06	30	2.04	15	1.02	N.R.	N.R.	N.R.	N.R.
10	75	5.10	45	3.06	30	2.04	15	1.02	N.R.	N.R.	N.R.	N.R.
12	50	3.40	30	2.04	20	1.36	10	0.68	N.R.	N.R.	N.R.	N.R.
14	50	3.40	30	2.04	20	1.36	10	0.68	N.R.	N.R.	N.R.	N.R.

NOTES: Full vacuum rating to a minimum of 120°F (49°C) for PVC. N.R. = Not Recommended.

## BASKET SPECIFICATIONS

Description	SIZES									
	6		8		10		12		14	
	In.	mm	In.	mm	In.	mm	In.	mm	In.	mm
Basket Diameter	7 1/16	202	9 3/4	248	11 1/8	289	13	330	13	330
Basket Length	29 13/16	757	36 1/8	920	42 1/8	1064	46	1168	52	1320
Hole Diameter	a) 1/4	6.4	1/4	6.4	1/4	6.4	1/4	6.4	1/4	6.4
	b) 1/8	3.2	1/8	3.2	1/8	3.2	1/8	3.2	1/8	3.2
	c) 1/16	1.6	1/16	1.6	1/16	1.6	1/16	1.6	1/16	1.6
	d) 1/32	.8	1/32	.8	1/32	.8	1/32	.8	1/32	.8
Hole Centers	a) 3/8	9.5	3/8	9.5	3/8	9.5	3/8	9.5	3/8	9.5
	b) 7/32	5.5	7/32	5.5	7/32	5.5	7/32	5.5	7/32	5.5
	c) 3/32	2.4	3/32	2.4	3/32	2.4	3/32	2.4	3/32	2.4
	d) 1/16	1.6	1/16	1.6	1/16	1.6	1/16	1.6	1/16	1.6
Basket Open Area	a) 269 <sup>2</sup>	1736 <sup>2</sup>	449 <sup>2</sup>	2897 <sup>2</sup>	502 <sup>2</sup>	3289 <sup>2</sup>	764 <sup>2</sup>	4929 <sup>2</sup>	840 <sup>2</sup>	5420 <sup>2</sup>
	b) 192 <sup>2</sup>	1239 <sup>2</sup>	321 <sup>2</sup>	2071 <sup>2</sup>	358 <sup>2</sup>	2310 <sup>2</sup>	546 <sup>2</sup>	3523 <sup>2</sup>	600 <sup>2</sup>	3871 <sup>2</sup>
	c) 110 <sup>2</sup>	710 <sup>2</sup>	184 <sup>2</sup>	1187 <sup>2</sup>	206 <sup>2</sup>	1329 <sup>2</sup>	313 <sup>2</sup>	2019 <sup>2</sup>	396 <sup>2</sup>	2555 <sup>2</sup>
	d) 62 <sup>2</sup>	400 <sup>2</sup>	103 <sup>2</sup>	665 <sup>2</sup>	115 <sup>2</sup>	742 <sup>2</sup>	176 <sup>2</sup>	1336 <sup>2</sup>	193 <sup>2</sup>	1245 <sup>2</sup>
Basket Capacity	494 <sup>3</sup>	8097 <sup>3</sup>	916 <sup>3</sup>	15013 <sup>3</sup>	1033 <sup>3</sup>	16931 <sup>3</sup>	2193 <sup>3</sup>	35943 <sup>3</sup>	2906 <sup>3</sup>	47629 <sup>3</sup>

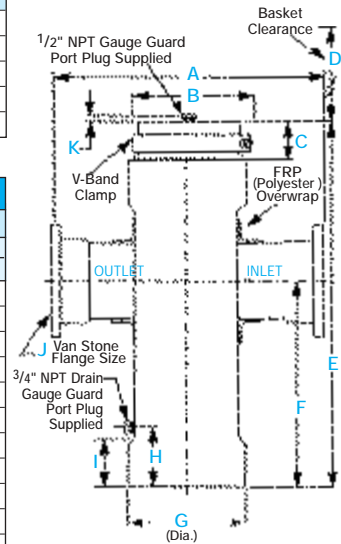
\*Capacity is measured from bottom of basket to the bottom of baskets inlet port. Consult factory for special dimensions.

## MODEL NUMBERS

Pipe Size	PVC
	FLANGED
6	VSTS0600EP-F-PV
8	VSTS0800EP-F-PV
10	VSTS1000EP-F-PV
12	VSTS1200EP-F-PV
14	VSTS1400EP-F-PV

## DIMENSIONS

	SIZES									
	6		8		10		12		14	
	In.	mm	In.	mm	In.	mm	In.	mm	In.	mm
A	25.0	635	32	813	35 1/2	902	36	914	38	965
B	12 1/4	310	14 1/4	361	14 1/4	361	17 1/2	438	17 1/2	438
C	23/4	70	23/4	70	23/4	70	23/4	70	23/4	70
D	29	736	35	889	41	1041	47	1194	53	1346
E	36	914	43	1092	49	1245	54	1372	60	1524
F	19 1/2	489	25	635	26 3/4	679	30	762	36	914
G	11 5/8	295	13 3/4	349	13 3/4	349	17 1/4	438	17 1/4	438
H	5 1/2	140	6 1/4	159	6 1/4	159	9	229	9	229
I	4 1/2	114	5	127	6	152	6	152	6	152
J	6	152	8	203	10	254	12	305	14	356
K	1/2	13	1/2	13	1/2	13	1/2	13	1/2	13



1384 Pompton Avenue, Cedar Grove, NJ 07009  
 (973) 256-3000 • Fax (973) 256-4745  
 www.plastomatic.com • info@plastomatic.com

AUTHORIZED PLAST-O-MATIC DISTRIBUTOR